

PSIG Year 12

Tracking progress

- September - GCSE results and ALIS
- October/November -Academic Reviews
- November - Course review/Learner review days
- December-Subject Evening
- January progress grades
- February – Academic Review
- March – Course review/Learner review days/results
- April – Academic Review
- May – Examinations

- ALIS DATA
- run by Durham University
- analysis of A level, AS level, applied A levels, BTEC national and IB examinations
- includes approximately 700 comprehensive schools

How does it work?

- Uses prior attainment at GCSE – average point score (APS)
- Uses relationship between grades students achieved at AS and A2 compared to the GCSE APS, in previous year
- These become predicted grades for current students

An example:

- Ben arrives at the centre with the following GCSE results.

Science	BB
Maths	A
French	C
English language	B
English literature	C
History	B
Music	A

- At AS level he has chosen to study maths, music, sociology and biology
- ALIS looks at how students who arrived with a similar GCSE average point score and studied these same subjects fared at A level the previous year

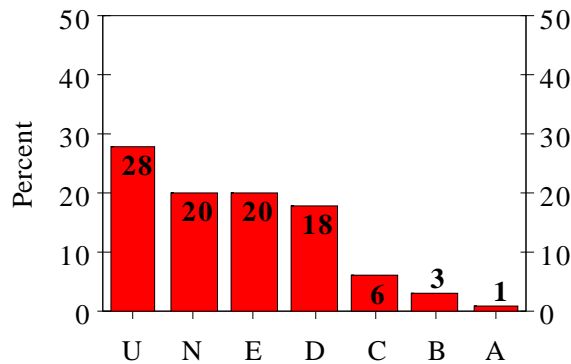
- these become Ben's minimum target grades:

Maths	C
Music	C
Sociology	B
Biology	C

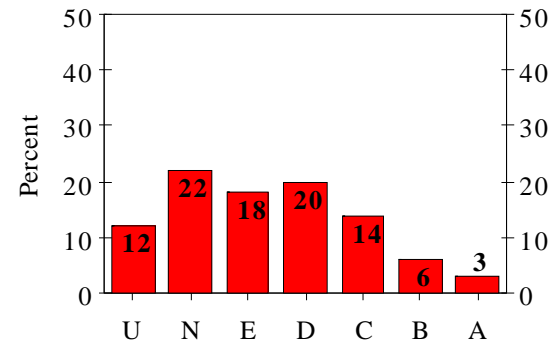
Average performance by similar students in past exams

Chances Graphs

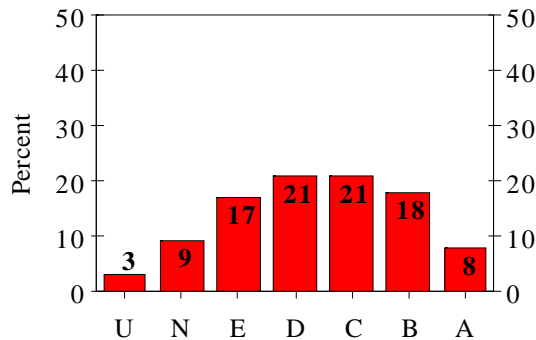
Average GCSE Less Than 5.18



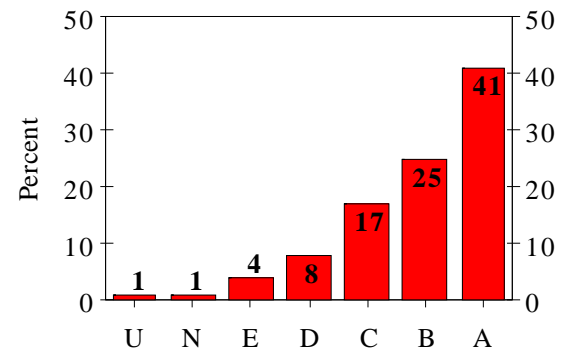
Average GCSE Between 5.18 and 5.80



Average GCSE Between 5.80 and 6.45



Average GCSE Greater Than 6.45



Why don't these match Ben's GCSE grades more closely?

- evidence shows that OVERALL performance at GCSE is the best indicator of how a student is likely to perform at A level
- However, these are minimum grades, a lot of students achieve beyond this – it helps you to know how your daughter/son is performing in their subjects. It helps us to know where they might be struggling.

What actually is the student's TMG?

- the grade which students with the same GCSE average point score in the previous year typically achieved at A2 level and are therefore used as a bench mark for your daughter/son.

For students:

- They have target GRADES – the minimum they should be aiming for, given that students in the same position as them last year achieved these grades.

Why do we use TMG's

1. To look at how your daughter/son is achieving, are they achieving their TMG's, are they struggling in one area, what can they do about this to ensure that they achieve their TMG.
2. Most of you have been used to targets throughout your son/daughters school career, these still continue at the Centre.

However....

- Personal Target
- Current Grade